

eSoGE News

Michaelmas 2011

The electronic newsletter of the School of Geography and the Environment, University of Oxford

Millions will be 'trapped' in areas facing environmental risks – Government Foresight report based on advice from a six-strong team of experts including Professor David Thomas

The 'Migration and Global Environmental Change' report published by the Government Office for Science's Foresight project, and based on advice from a six-strong team of experts including Professor David Thomas, has received extensive media coverage.

The report examines how profound changes in environmental conditions such as flooding, drought and rising sea levels will influence and interact with patterns of global human migration over the next 50 years - potentially resulting in millions becoming 'trapped' in vulnerable areas. It warns that by focusing solely on migrants leaving vulnerable areas, we risk underestimating the challenges and neglecting those who remain. It also highlights the transformative role that migration can have in helping communities adapt to challenges raised by climate change. The report's findings have implications for national and international policy makers working to avert costly humanitarian disasters in the future.



The 'Migration and Global Environmental Change' report

Commenting on the report, Professor David Thomas, Professor of Geography, said: "Future migration issues and associations with environmental change are complex: it is not simply a story of 'climate refugees'. Rather, critical concerns include the millions who will be trapped in areas prone to growing environmental risks, especially in low-income countries, and the movement of people towards areas where climate and environmental risks are going to grow in the next 50 years. Low-lying coastal zones, and the rapidly growing cities that they support, particularly in Asia and Africa, are particular issues policy makers should focus on."

More information is available from the University of Oxford website: www.ox.ac.uk/media/news_stories/2011/111020c.html and the full report can be downloaded from the Department for Business Innovation and Skills website: www.bis.gov.uk/foresight/migration

'The People's Planet: Reconnecting climate science, climate policy and reality' – Professor Myles Allen Inaugural Lecture



Professor Myles Allen

Professor Myles Allen, Professor of Geosystem Science at the School of Geography and the Environment and the Department of Physics, delivered his inaugural lecture at the Examination Schools on 24 November 2011.

Professor Allen joins the School from the Department of Physics, Oxford, where he continues to lead the Climate Dynamics Group. He said, "The technocratic ideal of

climate science informing climate policy informing real-world decisions isn't working. International negotiations and national policies are largely disconnected from actual decisions and only peripherally related to the risk of dangerous climate change. Claims that 'the science dictates' specific short-term targets have led to a predictable backlash against climate science itself. Part of the problem is that much of climate science addresses issues that are remote from everyday concerns. Few non-specialists care about emission scenarios beyond 2100 or the marginal skill of decadal forecasts.

(Article continued on p.2)

Professor Myles Allen Inaugural Lecture (cont'd)

“People primarily care about whether and how much climate change is affecting them today. This is a question we can answer, but it requires a more quantitative understanding of the links between climate and extreme weather. And the answer, a comprehensive global inventory of the impacts of anthropogenic climate change, might have far more impact than any climate treaty, since it opens the question of whether and how those adversely affected should be compensated by those who benefit from the production and use of greenhouse gas precursors. I will explore how a comprehensive liability regime might provide a more chaotic, inefficient but ultimately more effective resolution of the climate issue than the straight-jacket of centrally-planned emission controls.”

The lecture was followed by a panel discussion with Professor Robert Hahn, Director of Economics, SSEE, and former White House economic advisor on cap-and-trade, David Hone, Senior Climate Change Adviser, Shell International, Professor Sarah Whatmore, Professor of Environment and Public Policy, School of Geography and the Environment, Oxford, and Richard Black, Environment Correspondent, BBC.

Professor Diana Liverman meets with Dalai Lama to discuss ways in which human activities are changing the global environment



Professor Diana Liverman talking to the Dalai Lama during the conference

Professor [Diana Liverman](#), Visiting Professor in Environmental Policy and Development, was among a small group of scientists, theologians and ethicists who met with the Dalai Lama and his advisors during a conference in Dharamsala, India, in October 2011.

Professor Liverman was one of 13 participants, including the Dalai Lama, who took part in the five-day conference, “Mind & Life XXIII: Ecology, Ethics, Interdependence”, that explored the interconnection between environmental change, ethics and individual choices. Together, the group considered human-caused environmental degradation and what the appropriate ethical and spiritual response should be to ensure planetary stewardship.

In her conversation with the Dalai Lama, Professor Liverman addressed several points, including the accelerated impact of human activities on Earth’s natural environment, the risk of crossing irreversible planetary thresholds concerning climate change, ocean acidification, as well as biodiversity and pollution-boundaries that, if crossed, could prove devastating to the planet’s natural systems that support life.

More information is available on the ECI website: www.eci.ox.ac.uk/news/articles/111021dalailama.php and a video of the address is online via the Dalai Lama’s website: <http://dalailama.com/webcasts/post/210-ecology-ethics-and-interdependence--mind-and-life-xxiii>

School’s MSc courses to be part of new Oxford 1+1 MBA programme



The School of Geography and the Environment’s four MSc programmes are to be part of the new Oxford 1+1 Programme which enables exceptional and motivated students to combine their MSc with the Oxford MBA.

The MSc course provides students with the in depth understanding of the complex dynamic between environment, society and markets based on theory and empirical evidence. Students will then apply the knowledge they have gained to enhance their management skills on the MBA. There is growing evidence that this “depth + breadth” is what the world needs, and what employers seek.

Successful candidates for the Oxford 1+1 Programme will need to meet the admissions requirements for one of the School’s MScs: MSc in Biodiversity, Conservation and Management; MSc in Environmental Change and Management; MSc in Nature, Society and Environmental Policy; or MSc in Water Science, Policy and Management, as well as the MBA programme and will be admitted separately to both. Final approval for the programme is expected from the University at the beginning of December.

Further information on the School’s MSc courses and information on how to apply is available from the International Graduate School webpages: www.geog.ox.ac.uk/graduate/ Please see the Saïd Business School website for more information on the Oxford 1+1 Programme: www.sbs.ox.ac.uk/newsandevents/news/Pages/1+1.aspx For further media coverage of the Oxford 1+1 Programme see the University website: www.ox.ac.uk/media/news_stories/2011/11/1115b.html and the *Financial Times* website: www.ft.com/cms/s/2/cb68bc24-0afd-11e1-ae56-00144feabdc0.html

Scanning the rainforests with unique technology



Professor Yadvinder Malhi

A new project co-led by [Professor Yadvinder Malhi](#), Professor of Ecosystem Science, with the Carnegie Institution for Science and several other international partners, is making giant leaps in our understanding of tropical forest ecosystems.

The pioneering project uses a specially designed aircraft which combines lidar and hyperspectrometer remote sensing technologies to map how forests are changing in response to land use pressure and climate change, and to monitor how ecosystems are adapting. The aircraft uses an array of lasers to create 3D images of the canopy structure including images of individual trees and a hyperspectral laser is able to measure the chemistry of individual leaves allowing scientists to assess the amount of carbon an individual tree can sequester. In the near future it is envisaged that they will be able to identify the species and quantify the growth rates of individual

trees by just flying over an area of land, and thus be able to map tree diversity, biomass and growth at landscape scales.

The research project is taking place in the eastern slopes of the lowlands and Andes mountains of Peru. The diversity of these lowland forests is the highest found on earth, with approximately 300 species of trees per hectare. A major part of the field campaign involved climbing up to the forest canopy and sampling the chemistry, anatomy and photosynthetic properties of leaves from 1900 trees in order to calibrate and evaluate the airborne sensors.

“This technology has the potential to push ecology forward by at least ten years,” said Professor Malhi. “It is like having an MRI scan of the ecosystem and we are just beginning to work out the huge potential of the data.”

More information and a film of the 2011 Joint Amazon Carnegie RAINFOR expedition is available from the Oxford Martin School website: www.oxfordmartin.ox.ac.uk/news/201110-news-Yadvinder

ECI's first commercial spin-out is an energy-saver for business

The first spin-out from the Environmental Change Institute, Pilio Limited, provides a cost-effective online tool enabling small and medium businesses to monitor and manage their energy usage. The tool could enable savings of up to 40 per cent from energy bills.

Pilio's online energy monitoring tool, sMeasure, was developed and piloted at the University's Environmental Change Institute as part of a research project looking at ways of reducing energy demand and was funded by the UK Energy Research Centre. sMeasure has been available online for three years and in the last year was used by over 400 businesses to monitor their energy use. sMeasure works by combining two sets of data: gas and electricity meter readings provided by the customer and weather data to accurately assess a building's energy efficiency. It requires no additional meters or devices.



Dr Russell Layberry and Catherine Bottrill, co-founders of Pilio, at the new company's launch

Pilio has spent one year as part of the Isis Innovation Software Incubator and was supported by the ISIS managed Oxford University Challenge Seed Fund. Pilio's UK clients include Greater Authority of London, Julie's Bicycle, Ebico and Severn Wye Energy Agency. sMeasure is also expanding into the US market as part of the Innovator Pilot Project with Sierra Business Council supported by Pacific Gas and Electric, the largest utility company in the US. Over the next year, sMeasure aims to increase the number of UK and US SMEs it works with four-fold. Companies can visit the Pilio website and get a free 30 day trial of sMeasure. No downloads or kit are necessary.

More information is available from the Pilio Limited website: <http://www.pilio-ltd.com/> and the ECI website: www.eci.ox.ac.uk/news/articles/111107pilio.php

Scientists create global map of religious forests to protect biodiversity hotspots



Dr Shonil Bhagwat

[Dr Shonil Bhagwat](#), Course Director of the School's MSc in Biodiversity, Conservation and Management, and Ashley Massey, DPhil candidate, together with researchers from the Biodiversity Institute, Oxford, are aiming to produce a global map of the land owned or revered by the world's religions.

Many of these sacred sites contain some of the richest biodiversity in the world, including some of the highest numbers of threatened species, but most receive no formal protection. The researchers hope this evidence-based assessment will be the first step in ensuring these biodiversity hotspots are fully protected by regional or national governments. The research builds



upon previous work undertaken in collaboration with Alliance of Religions and Conservation (ARC) and collaboration has begun with another similar project, SANASI, in order to spearhead an evidence-based approach that identifies and assesses all religious forests, including those managed by much smaller groups.

Dr Bhagwat said, "We urgently need to map this vast network of religious forests, sacred sites and other community-conserved areas to understand their role in biodiversity conservation. Such mapping can also allow the custodian communities, who have protected these sites for generations, to secure their legal status."

More information is available from the University of Oxford website: www.ox.ac.uk/media/news_stories/2011/110108.html

Update on the future of adaptation delivery in the UK

UKCIP has updated its look to mark the start of a new stage of work following the end of its contract with Defra on 30 September 2011.

The new look reflects changes to UKCIP's organisation, name and funding – it is no longer called the UK Climate Impacts Programme, but is now simply known by the acronym, UKCIP. From 1 October 2011, the Environment Agency became the Government's delivery body in England for advice on climate adaptation and for helping key sectors build resilience to the impacts expected from climate change. The Environment Agency replaces and builds on the activity that has been delivered by UKCIP since 1997. Under an agreement between the Environment Agency and the University of Oxford, UKCIP will continue to work as a delivery partner with the Environment Agency to ensure the continued provision of resources, support and guidance on adaptation until March 2012.

UKCIP will continue to build on their stakeholder-focussed work, based on their experience of working with many organisations in the UK and abroad, and supported by a range of partners. All UKCIP's existing tools and resources will continue to be available free online via their website.



More information is available from the UKCIP website: www.ukcip.org.uk/

Hidden value of nature revealed in groundbreaking study

In June 2011 the UK National Ecosystem Assessment (UKNEA) was published receiving extensive media coverage.

The assessment attempted to calculate the true value of the UK's natural environment in terms of the benefit it provides to society and continuing economic prosperity. It examined the processes that link human societies and their well-being with the environment and emphasised the role of ecosystems in providing services that bring well-being to people. [Dr Pam Berry](#), Senior Research Fellow at the Environmental Change Institute, was responsible for the England chapter which synthesises the UKNEA findings at a country level. The chapter examined the status and trends in England in biodiversity, the eight Broad habitats and in ecosystem services, the drivers of change and their consequences, as well as the role of sustainable management to enhance ecosystem services.



Dr Pam Berry

The full report is available from the UKNEA website: <http://uknea.unep-wcmc.org/> Further information is available from Defra www.defra.gov.uk/news/2011/06/02/hidden-value-of-nature-revealed/ and the ECI website: www.eci.ox.ac.uk/news/articles/110602-nea.php

'Ghosts of Gone Birds'



The [Ghosts of Gone Birds](#) exhibition recently opened in the east end of London, with the aim of raising awareness of bird extinction through a series of multimedia exhibitions that breathe artistic life back into extinct bird species, by celebrating their diversity through paintings, sculpture, talks, poetry, installations and live music.

School of Geography and the Environment staff, [Rob St. John](#) and [Dr Paul Jepson](#), both wrote essays for

the exhibition journal, discussing different aspects and definitions of extinction. Over 80 artists, writers and musicians contributed work to the project including, Sir Peter Blake, Ralph Steadman and Margaret Atwood. Each one adopted an extinct species for artistic interpretation.

Ghosts of Gone Birds raised money and awareness for BirdLife International's Preventing Extinctions programme and the exhibition ran until 23rd November at Rochelle School, Arnold Circus, Shoreditch, London E2 7ES.

Online debates

[Dr Matthias Fripp](#), NextEra Energy Resources Research Fellow in Renewable Energy at the Environmental Change Institute, took part in a live debate on *The Economist* website.



Dr Matthias Fripp

Dr Fripp defended the motion 'This house believes that subsidising renewable energy is a good way to wean the world off fossil fuels'. His opponent was Professor Robert L. Bradley Jr, Founder and chief executive officer, Institute for Energy Research.

For more information on the debate, and to view the results, see *The Economist* website: www.economist.com/debate/debates/overview/217

Earlier in the year, [Professor David Banister](#), Professor of Transport Studies and Director of the Transport Studies Unit, also participated in an online debate against Paul Everitt of the Society of Motor Manufacturers and Traders, over 'Should there be a role for cars in a low-carbon future'. The debate was part of *The Times*' Eureka Fight Club. See the TSU website for more information: www.tsu.ox.ac.uk/news/guardianfightclub.pdf

'Heritage and Lessons' - Humanitas Visiting Professor in Architecture Lecture and Symposium

Professor the Lord Foster of Thames Bank OM, Humanitas Visiting Professor in Architecture and Visiting Professor in the School of Geography and the Environment, will deliver the Humanitas Visiting Professor in Architecture lecture, entitled 'Heritage and Lessons', on 28 November 2011 at the Saïd Business School.



Professor the Lord Foster of Thames Bank OM

Lord Foster's lecture will be followed on Tuesday 29 November by a symposium convened by the School of Geography and the Environment and chaired by [Professor David Banister](#), Professor of Transport Studies and Director of the Transport Studies Unit. The title of the symposium is 'The Future of Airport Capacity' and contributors will include experts in infrastructure, environment and planning.

Professor the Lord Foster of Thames Bank OM is one of the most important architects practising in the world today. He is Chairman and founder of Foster + Partners, based in London, with project offices worldwide. Over the past four decades the practice has pioneered a sustainable approach to architecture and ecology through a strikingly wide range of work, from urban masterplans, public infrastructure, airports, civic and cultural buildings, offices and workplaces to private houses and product design. He became the 21st Pritzker Architecture Prize Laureate in 1999 and was awarded the Praemium Imperiale Award for Architecture in 2002. In 2009, he became the 29th Laureate of the prestigious Prince of Asturias award for the Arts.

More information is available from the Humanities Division website: www.humanities.ox.ac.uk/events/humanitas/architecture_-_lord_foster

'Climate Change, Deforestation and the Future of African Rainforests' - International Conference, 4-6 January 2012

In January 2012, the Oxford Centre for Tropical Forests is hosting an international conference that provides a multidisciplinary examination of the fate of African tropical forests in the 21st century.

At a time of increased global interest in the future of tropical forests, the conference is intended to be a key international event that synthesises existing knowledge and fosters creative thinking and collaboration on the future of this important region.



scientific insights into the future of African tropical forests, which will then be disseminated to a wider audience as an evidence base to inform decision-making. The [Oxford Centre for Tropical Forests](#), based in the Environmental Change Institute (ECI) and the Oxford Martin School, is a network of Oxford University departments and neighbouring NGOs, consultancies and businesses in the Oxford area. The centre is led by [Professor Yadvinder Malhi](#), Professor of Ecosystem Science at the School of Geography and the Environment.

The conference will be held at Oriel College, Oxford, and aims to synthesise a scientific and authoritative summary of

For more information and to register please see the conference website at: www.eci.ox.ac.uk/africa/

'Progress and integration in desert research' – 2nd Oxford Interdisciplinary Desert Conference, 29-30 March 2012

Following the successful 1st Oxford Interdisciplinary Desert Conference in 2010, the School will host the 2nd Oxford Interdisciplinary Desert Conference in 2012 with the aim of bringing together UK researchers interested in dryland people and environments.

The goal is to stimulate debate and collaboration across academic departments, share knowledge and expand desert paradigms. With the theme of 'Progress and integration in desert research' we look forward to papers and discussion that bring together the different approaches and perspectives applied to desert research. The conference takes place 29-30 March 2012, with an optional field trip on 'T.E. Lawrence's Oxford' on the afternoon of the 28 March.



The conference will highlight the multiple disciplines that work in desert environments and will present original research combinations from social and natural scientists working in shared topics or environments over different dimensions and timescales. We look forward to session presentations in fields from across the social and physical sciences including, Archaeology, Geography, Earth Sciences, and International Relations through History, Anthropology, Development and Zoology. We also invite desert perspectives from beyond academia regarding NGO / business / government views that make use of, and fund, academic study or have major dryland impacts.

For more information and to register please see the conference website at: www.geog.ox.ac.uk/news/events/deserts/

'Water Security, Risk and Society' – International Water Security Conference, 16-18 April 2012



Water security is a defining challenge for society in the 21st century. The ancient struggle to cope with access to water and the effects of floods and droughts is now magnified by complex and uncertain processes of global change to societies, economies and climate at multiple scales.

Water security refers to societal goals of specific water outcomes, for example ensuring reliable access to particular water quantity and quality for people, agriculture, industry and ecosystems, as well as a tolerable level of risk of unpredictable water-related events, such as floods and droughts. This goal necessarily cuts across scales from individual access to safe drinking water and sanitation facilities, to local water service providers for various uses, to transboundary river basins, and to regional and global water fluxes.

The conference will convene leading scientists and members of industry and government to advance the water security agenda and build partnerships across theory, policy and practice. It seeks to advance scientific inquiry and inform policy choices by developing an evidence base on the status of and pathways to water security in terms of multiple risks, scales, and actors. It also aims to address water security challenges in developed and developing countries and regions, by seeking to identify and elucidate global interdependencies between different socio-economic and cultural contexts.

A pre-conference workshop on 'Water Security and Federal Rivers' will be held immediately prior to the conference on 15 - 16 April at Magdalen College, Oxford.

For more information and to register please see the conference website at: www.geog.ox.ac.uk/watersecurity/

Spotlight on new research – Dr Dustin Garrick joins the Oxford Water Futures Programme

Dr Dustin Garrick joined the School in June 2011 as a researcher in the Oxford Water Futures Programme. He holds a PhD in Geography (University of Arizona) and Master's degree in Environmental Science and Policy (Columbia University).

Dr Garrick specialises in comparative water policy and economic analysis. His research examines the effectiveness of policy responses to climate variability in water-scarce transboundary rivers. This research applies concepts and methods of institutional economics and draws heavily on the Institutional Analysis and Development Framework developed by Elinor Ostrom and colleagues.

Dr Garrick has a decade of experience at the interface of water research and practice. Before coming to Oxford, he was a Fulbright Scholar in Australia (2010-2011), where his research examined water trading and river basin governance in the Murray-Darling Basin. He maintains an active water policy and economics research programme in Australia and is a research associate with the Centre for Water Economics, Environment and Policy at Australia National University. Past research has developed and tested interdisciplinary

frameworks for water policy and economic evaluation. His PhD dissertation evaluated a water rights trading programme in the Columbia Basin (U.S.A.). He also served as a project manager for three years on an award-winning knowledge exchange programme focused on the integration of climate change information into water resource planning and drought management in the Colorado River Basin.



Dr Dustin Garrick

Current research and engagement activities contribute to the Oxford Water Security Initiative led by Professors David Grey and Jim Hall. He is co-organising the April 2012 international conference [Water Security, Risk and Society](#). He is also the lead organizer for a special pre-conference workshop on Water Security and Federal Rivers. The workshop will convene experts in transboundary river management from the world's large federal states. The workshop

will elaborate a comparative framework and develop case studies on the socio-political and economic dimensions of water security in federal rivers. In 2012, Dr Garrick will advance projects in Australia and Spain focused on socioeconomic aspects of water reallocation (Australia) and the institutional economics of river basin management (Spain).

'Advances in Biogeography' - International Biogeography Society Early Career Conference, September 2011



Over 23 - 25 September 2011 the School hosted the International Biogeography Society's Early Career "Advances in Biogeography" Conference.

The conference focussed on current postgraduate students, and those who have recently completed their doctorates, who were interested in biogeography topics. The aim was to provide a forum in which early career

biogeographers had an opportunity to present and discuss their work through formal oral and poster presentations, and to encourage the formation of informal peer-to-peer networks through evening mixer events which were also attended by IBS board members and other senior scientists. There were also four keynote talks by professional covering a range of career stages and topics, as well as a science-writing workshop open to all attendees that was led by [Professor Robert J. Whittaker](#), Professor of Biogeography at the School and Editor-in-Chief of the Journal of Biogeography.

For more information, copies of the talks and photos from the event please see the conference website at: www.biogeography.org/html/Meetings/2011Oxford/

2011 Allianz-Oxford Pensions Conference

The 2011 Allianz-Oxford Pensions Conference, 'Pension Challenges in the New Normal: Risk - Investment - Design - Regulation', was hosted by the School over 22 - 23 September 2011.



The conference was organised by [Professor Gordon L. Clark](#), Halford Mackinder Professor of Geography, and Dorothee Franzen, DPhil candidate, in association with [Allianz Global In-](#)

[vestors](#). For more information and copies of the talks from the 2011 event please see the conference website at: www.geog.ox.ac.uk/news/events/110922/

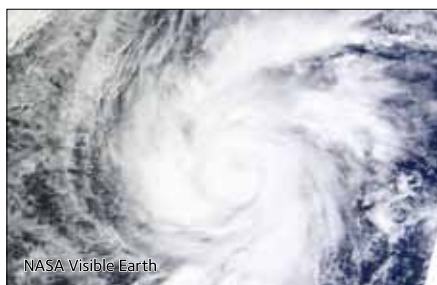
The 2012 Allianz-Oxford Conference will be held from the 27 - 28 September 2012. Please see the 2012 conference website for more information: www.geog.ox.ac.uk/news/events/120927/

'Riding the Perfect Storm' - 2011 Linacre Lectures

The theme of the 2011 Linacre Lectures was Professor Sir John Beddington's "Perfect Storm" idea.

Professor Beddington's "Perfect Storm" scenario contends that the world is at significant risk of facing multiple interacting environmental and natural resource challenges by 2030 based on the interaction and cross-amplification of emerging food, water and energy shortages, which, on reaching a critical threshold, could lead to public unrest, cross-border conflicts and mass migration. Professor Beddington is the Chief Science Advisor to the UK Government.

The 2011 Linacre Lectures, which were held during Hilary Term (January - March 2011), began with a panel discussion on 'Cancun COP16: A beacon of hope re-ignited?' and featu-



red lectures by leading scientists including Lester R. Brown, President, Earth Policy Institute, Washington DC, Professor David Grey, Visiting Professor in Water Policy at the School, Professor Angela McLean, Co-Director, Institute for Emerging Infections, Oxford, Dr Simon Stuart, Chair of the Species Survival Commission, International Union for Conservation of Nature, and Visiting Professor, University of Bath,

Professor Tim Lang, City University London, and Professor Paul Ekins, Energy Institute, University College London. The series culminated in a question and answer panel session.

The Linacre Lectures are supported by Tetra Laval and organised by Linacre College and the Environmental Change Institute. Further information and podcasts of the lectures are available from the ECI website: www.eci.ox.ac.uk/news/events/linacre11/

Recent awards



[Professor David Thomas](#), Professor of Geography (pictured, on left), was awarded the Farouk El-Baz award of the Geological Society of America for significantly advancing the field of desert research. Professor Thomas has also recently been elected Honorary Professor at the University of Cape Town, for a further five years from December 2011.

[Professor Diana Liverman](#), Visiting Professor in Environmental Policy and Development, was awarded the AAG Distinguished Scholarship Honours at the 2011 Annual Meeting

[Professor Linda McDowell](#), Professor of Human Geography, has been elected as a member of the Council of the British Academy for a three year period from September 2011.

[Professor Rob Whittaker](#), Professor of Biogeography, has been admitted as a Fellow of the Society of Biology. He was also elected a foreign correspondent member of the Academy of Sciences of Lisbon in July 2011.

[Dr Tom Thornton](#), Course Director of the MSc in Environmental Change and Management, was awarded second place in the 2011 Julian Steward Award by the Anthropology and Environment Section of the American Anthropological Association for his book *Being and Place Among the Tlingit*.

[Professor Edmund Penning-Rowsell](#), Visiting Research Associate, honoured with the Back Award for research contributing to national and international flood policy

[James Macmillen](#), Research Fellow in Sustainable Urban Futures at the Transport Studies Unit, was awarded the 2011 Brettschneider Award which funded a week-long visit to Cornell University in New York.

[Dr Jack Langton](#), Emeritus Research Fellow, has been awarded an honorary doctorate by the University of Uppsala, which will be conferred in January 2012.

Chang Liu (St John's College), who graduated in 2010, has won 3rd prize in the Royal Geographical Society's Rural Geography Research Group undergraduate dissertation prize. His dissertation title was "From the household responsibility system to the present: economic differentiation between rural households in Xiaotan village, Inner Mongolia."

Recent major research grants

i-Coast - Integrated Coastal Systems

Professor Jim Hall. Financial support from NERC; 2012-2016.

Besafe - Biodiversity and ecosystem services: arguments for our future environment

Dr Paula Harrison and Dr Pam Berry. Financial support from the European Commission; 2011-2015.

[Diaspora youth: economic disadvantage, the construction of masculinity and inter-group relations](#)

Professor Linda McDowell in collaboration with the Oxford International Migration Institute as part of the Oxford Diasporas Programme. Financial support from the Leverhulme Trust; 2011-2015.

Geocarbons - An operational integrated global carbon observation and analysis system

Professor Yadvinder Malhi. Financial support from the European Commission; 2011-2014.

Long term dynamics of interdependent infrastructure systems

Dr Nick Eyre. Financial support from EPSRC; 2011-2015.

Does shifting carbon use efficiency determine the growth rates of intact and disturbed tropical forests?

Gathering new evidence from African forests

Professor Yadvinder Malhi. Financial support from NERC; 2011-2014.

Oxford climate research network stakeholder engagement initiative

Professor Myles Allen. Financial support from the John Fell Fund, University of Oxford; 2011-2014.

[Transport and accessibility in low income communities in the Recife metropolitan region](#)

Dr Karen Lucas in collaboration with the University of Pernambuco, Brazil. Financial support from Brazilian National Science Research Council; 2011-2014.

[TranSENDaNC: Transport and social exclusion: new directions and national comparisons](#)

Dr Karen Lucas and Dr Tim Schwanen in collaboration with the University of Ghent, Belgium and the Universidad de Concepción, Chile. Financial support from EU Marie Curie International Researcher Exchange Scheme (IRSES); 2011-2014.

Continued on next page...

Recent major research grants (cont'd)

Eco-renovation: technology transfer events

Jo Hamilton. Financial support from Oxford City Council; 2011-2013.

Examining the bioprotection value of plants and species on rocks and man made intertidal structures and to make practical recommendations for their use

Professor Heather Viles. Financial support from the Esmee Fairbairn Charitable Trust; 2011-2013.

Fixing futures? Towards a comparative analysis of educated unemployed youth politics

Dr Craig Jeffrey. Financial support from the John Fell Fund, University of Oxford; 2011-2013.

[Modelling the relationships between transport poverty and social disadvantage](#)

Dr Karen Lucas. Financial support from ESRC; 2011-2013.

[New and emerging technologies - Smart Water Systems Phase 2](#)

Dr Rob Hope. Financial support from DfID; 2011-2013.

[Merseytravel neighbourhood travel teams evaluation study](#)

Dr Karen Lucas. Financial support from the Merseytravel Passenger Transport Authority; 2011-2012.

Recently completed DPhil students

Csaba Burger – *Occupational pensions in Germany – an economic geography*. Supervisor: Professor Gordon L. Clark

Dominique Chaput – *Structure, diversity and metabolic profile of lithobiontic communities inhabiting exposed arctic granite: a molecular microbial ecology approach*. Supervisors: Professor Heather Viles and Prof.A.Whiteley (Centre for Ecology and Hydrology)

Murat Erdal – *The making of sovereignty through changing property / land rights and the contestation of authority in Cyprus*. Supervisors: Dr Ali Rogers and Dr Y. Navaro-Yashin (Cambridge)

Andrew Foxall – *The geopolitics of ethnic relations in Russia: ethnic Russian and non-ethnic Russian citizens in Stavropol'skii Krai*. Supervisor: Professor Judith Pallot

Cecile Girardin – *Ecosystem carbon dynamics from Andes to Amazon*. Supervisors: Professor Yadvinder Malhi and Professor Robert J. Whittaker

Taylor Gray – *A corporate geography of Canada: governance and networks*. Supervisor: Professor Gordon L. Clark

Elizabeth Jeffers – *The dynamics of ecosystem processes over successional time scales: plant population responses to environmental change and their feedback effects on ecosystem functioning*. Supervisors: Prof K Willis and Dr M Bonsall (Zoology, Oxford)

Danae Maniatis – *Methodologies for measuring aboveground biomass in the Congo basin forest in a UNFCCC REDD+ context*. Supervisor: Professor Yadvinder Malhi

Lisa Mol – *Sandstone weathering, electrical resistivity tomography, and the deterioration of San rock art in the Golden Gate Highlands National Park, South Africa*. Supervisor: Professor Heather Viles

Kamakshi Mubarak – *Everyday networks, politics and inequalities in post-tsunami recovery: fisher livelihoods in south Sri Lanka*. Supervisors: Dr Patricia Daley and Dr Craig Jeffrey

Goranij Nonejuie – *An analysis of the role of dynamic Participatory Geographical Information Systems (PGIs) in supporting different water stakeholders in Rayong Basin, Thailand*. Supervisor: Dr Rachael McDonnell

Bernardo Cesar Peredo – *Forest governance and development: meandering paradigms in the Bolivian lowlands*. Supervisors: Professor Diana Liverman and Dr Tom Thornton

Ameyali Ramos Castillo – *Water governance in San Cristobal de las Casas, Chiapas, Mexico*. Supervisor: Professor Diana Liverman

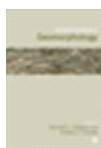
Joel Scriven – *Markets and payments for ecosystem services: engaging REDD+ on Peru's Amazonian frontier*. Supervisors: Professor Diana Liverman and Professor Yadvinder Malhi

Erika Trigoso Rubio – *Spatial characterization of vulnerability to climate change impacts in Puno, Peru*. Supervisor: Professor Diana Liverman

Royd Vinya – *Stem hydraulic architecture and xylem vulnerability to cavitation for Miombo woodland canopy tree species*. Supervisors: Professor Yadvinder Malhi and Dr N. Brown (Plant Sciences, Oxford)

Recent publications

Recent books ...



Gregory, K.J. and Goudie, A.S. (eds.) (2011) [The SAGE Handbook of Geomorphology](#), SAGE. 610 pp. ISBN: 9781412929059.



Thomas, D.S.G. (ed.) (2011) [Arid Zone Geomorphology: Process, Form and Change in Drylands](#), 3rd Edition. Wiley, 648 pp. ISBN: 9780470519080.



Richardson, K., Steffen, W. and Liverman, D. (2011) [Climate Change: Global risks, challenges and decisions](#), Cambridge University Press, 501 pp. ISBN: 9780521198363.



Wójcik, D. (2011) [The Global Stock Market: Issuers, investors and intermediaries in an uneven world](#). Oxford University Press. 224 pp. ISBN: 978-0-19-959218-0.

Other recent publications ...

Akimov, A. and Banister, D. (2011) [Urban public transport in Post-Communist transition: the case of Tashkent, Uzbekistan](#). *Comparative Economic Studies*, 53: 1-35.

Akyelken, N. (2011) Distance in the existence of political pathologies: rationalized transport policies and trade. In, Button, K. and A. Reggiani (eds.) [Transportation and Economic Development Challenges](#), Edward-Elgar, 264 pp. ISBN: 9781849801676.

Akyelken, N. (2011) [Review of: McKinnon, A., Cullinane, S., Browne, M. and Whiteing, A. \(2010\) The Economic Geography of the UK](#). Sage, London. *Transport Reviews*.

Akyelken, N. (2011) [Review of: McKinnon, A., Cullinane, S., Browne, M. and Whiteing, A. \(2010\) Green Logistics: Improving the environmental sustainability of logistics](#). Kogan Page Limited, London. *Transport Reviews*, 31(4): 547-548.

Alexander, B., Hubers, C., Schwanen, T., Dijst, M. and Ettema, D. (2011) [Anything, anywhere, anytime? Developing measurement instruments to assess the spatial and temporal fragmentation of activities](#). *Environment and Planning B: Planning and Design*, 38(4): 678-705.

Anable, J., Brand, C., Tran, M. and Eyre, N. (in press, 2011) [Modelling transport energy demand: A socio-technical approach](#). *Energy Policy*.

Anderson, M.G., Holcombe, E.A., Blake, J., Ghesquiere, F., Holm-Nielsen, N. and Fisseha, T. (2011) [Reducing landslide risk in communities: evidence from the Eastern Caribbean](#). *Applied Geography*, 31(2): 590-599.

Arvizu, D., Bruckner, T., Edenhofer, O., Estefen, S., Faaij, A., Fischedick, M., Hiriart, G., Hohmeyer, O., Hollands, K.G.T., Huckerby, J., Kadner, S., Killingtveit, Å., Kumar, A., Lewis, A., Lucon, O., Matschoss, P., Maurice, L., Mirza, M., Mitchell, C., Moomaw, W., Moreira, J., Nilsson, L.J., Nyboer, J., Pichs-Madruga, R., Sathaye, J., Sawin, J., Schaeffer, R., Schei, T., Schlömer, S., Seyboth, K., Sims, R., Sinden, G., Sokona, Y., von Stechow, C., Steckel, J., Verbruggen, A., Wiser, R., Yamba, F., Zwickel, T. (2011) Technical Summary. In, Edenhofer, O., Pichs-Madruga, R., Sokona, Y., Seyboth, K., Matschoss, P., Kadner, S., Zwickel, T., Eickemeier, P., Hansen, G., Schlömer, S. and C. von Stechow (eds.) [IPCC Special Report on Renewable Energy Sources and Climate Change Mitigation](#), Cambridge University Press.

Atkinson, O.A.C., Thomas, D.S.G., Goudie, A.S. and Bailey, R.M. (2011) [Late Quaternary chronology of major dune ridge](#)

[development in the northeast Rub' al-Khali, United Arab Emirates](#). *Quaternary Research*, 76(1): 93-105.

Banister, D. (2011) [The trilogy of distance, speed and time](#). *Journal of Transport Geography*, 19(4): 950-959.

Banister, D., Anderton, K., Bonilla, D., Givoni M. and Schwanen T. (2011) [Transportation and the environment](#). *Annual Review of Environment and Resources*, 36: 247-270.

Banister, D. and Hickman, R. (2011) [Low-carbon transport in a developed megalopolis: the case of London](#). In, Rothengatter, W., Hayashi, Y., Schade, W. (eds.) [Transport Moving to Climate Intelligence](#). Springer, pp. 41-52, ISBN: 978-1-4419-7642-0.

Barlow, J., Ewers, R.M., Anderson, L., Aragao, L.E., Baker, T.R., Boyd, E., Feldpausch, T.R., Gloor, E., Hall, A. and Malhi, Y. (2011) [Using learning networks to understand complex systems: a case study of biological, geophysical and social research in the Amazon](#). *Biological Reviews*, 86(2): 457-474.

Barua, M. (2011) [Mobilizing metaphors: the popular use of keystone, flagship and umbrella species concepts](#). *Biodiversity and Conservation*.

Bates, A.J., Sadler, J.P., Fairbrass, A.J., Falk, S.J., Hale, J.D. and Matthews, T.J. (2011) [Changing bee and hoverfly pollinator assemblages along an urban-rural gradient](#). *PLoS ONE*, 6(8), e23459.

Bates, C. (2011) [Experimenting with sociology: a view from the Outlook Tower](#). *Sociological Research Online*, 16(3).

Bergman, N. and Eyre, N. (2011) [What role for microgeneration in a shift to a low carbon domestic energy sector in the UK?](#) *Energy Efficiency*, 4(3): 335-353.

Berry, P.M. (2011) Integrating biodiversity conservation in to other mitigation and adaptation activities: how to build synergistic outcomes that benefit both. In, Richardson, K., Steffen, W. and D. Liverman (eds.) [Climate Change: Global Risks, Challenges & Decisions](#), Cambridge University Press, pp. 439-441.

Berry, P. and Hopkins, J. (2011) England Synthesis. In, Watson, R. and Albon, S. (eds.) (2011) [UK National Ecosystem Assessment: Synthesis of the Key Findings](#). UNEP-WCMC, Cambridge.

Bhagwat, S.A., Dudley, N. and Harrop, S.R. (2011) [Religious following in biodiversity hotspots: challenges and opportunities for conservation and development](#). *Conservation Letters*, 4: 234-240.

- Bhagwat, S.A., Ormsby, A.A. and Rutte, C. (2011) [The role of religion in linking conservation and development: challenges and opportunities](#). *Journal for the Study of Religion, Nature and Culture*, 5(1): 39-60.
- Bishop, J.D.K., Axon, C.J., Banister, D., Bonilla, D., Tran, M. and McCulloch, M.D. (2011) [Using non-parametric statistics to identify the best pathway for supplying hydrogen as a road transport fuel](#). *International Journal of Hydrogen Energy*, 36: 9382-9395.
- Boardman, J. and Foster, I.D.L. (2011) [The potential significance of the breaching of small farm dams in the Sneeuweg region, South Africa](#). *Journal of Soils and Sediments*.
- Bonilla, D. and Akyelken, N. (2011) Vision. Chapter 7, in Helmreich, S. and H. Keller (eds.) [FREIGHTVISION - Sustainable European Freight Transport 2050: Forecast, Vision and Policy Recommendation](#). Springer, pp. 127-134. ISBN 978-3-642-13370-1.
- Boyd, E., Street, R., Gawith, M., Lonsdale, K., Newton, L., Johnstone, K., Metcalf, G. and Ashlin, A. (2011) Leading the UK adaptation agenda: a landscape of stakeholders and networked organizations for adaptation to climate change. In Ford, J.D. and L. Berrang-Ford (eds.) [Climate Change Adaptation in Developed Nations: From Theory to Practice](#). Springer.
- Brand, C., Tran, M. and Anable, J. (2011) [Low carbon vehicle taxation and its potential to accelerate transitions to a low carbon transport sector in the UK](#). *Proceedings of the European Council for an Energy Efficient Economy Summer Study 2011*, Hyeres, France.
- Brand, C., Tran, M. and Anable, J. (in press, 2011) [The UK transport carbon model: an integrated life cycle approach to explore low carbon futures](#). *Energy Policy*.
- Brown, A., Gawith, M., Lonsdale K. and Pringle P. (2011) [Managing adaptation: linking theory and practice](#). UKCIP, Oxford. February 2011.
- Bulkeley, H., Schroeder, H., Janda, K., Zhao, J., Armstrong, A., Chu, S. and Ghosh, S. (2011) The role of institutions, governance and planning for mitigation and adaptation by cities. In, Hoornweg, D., Frire, M., Lee, M., Bhada, P. and B. Yuen (eds.) [Cities and Climate Change: An Urgent Agenda](#), The World Bank, Washington, DC. pp. 68-88.
- Burger, C. and Clark, G.L. (2011) [The German model of risk distribution in supplementary occupational pensions](#). *The Journal of Risk*, 13(3).
- Burger, C., Clark, G.L., Franzen, D., Heldmann, J. and Karch, H. (2011) [Betriebliche Altersvorsorge in Deutschland - ergebnisse einer expertenumfrage](#). *Betriebliche Altersversorgung*, 1: 64-72.
- Butt, N., Afonso de Oliveira, P. and Costa, M. (2011) [Evidence that deforestation affects the onset of the rainy season in Rondonia, Brazil](#). *Journal of Geophysical Research*, 116: D11120.
- Carmona, G., Varela-Ortega, C. and Bromley, J. (2011) [The use of participatory object-oriented Bayesian networks and agro-economic models for groundwater management in Spain](#). *Water Resources Management*, 25(5): 1509-1524.
- Clark, G.L. (2011) [Myopia and the global financial crisis: Context-specific reasoning, market structure, and institutional governance](#). *Dialogues in Human Geography*, 1(1): 4-25.
- Clark, G.L. and Knight, E.R.W. (2011) [Temptation and the virtues of long-term commitment: the governance of sovereign wealth fund investment](#). *Asian Journal of International Law*, 1: 321-348.
- Clark, G.L. and Monk, A.H.B. (2011) [Pension reserve funds: aligning form and function](#). *Rotman International Journal of Pension Management*, 4(2): 18-25.
- Clark, G.L. and Monk, A.H.B. (2011) [The political economy of US-China trade and investment: the role of the China Investment Corporation](#). *Competition and Change*, 15(2): 97-115.
- Collins, M., Macdonald, E.A., Clayton, L., Dunggio, I., Macdonald, D.W. and Milner-Gulland, E.J. (2011) [Wildlife conservation and reduced emissions from deforestation in a case study of Nantu Wildlife Reserve, Sulawesi: 2. An institutional framework for REDD implementation](#). *Environmental Science and Policy*, 14(6): 709-718.
- Collins, M., Milner-Gulland, E.J., Macdonald, E.A. and Macdonald, D.W. (2011) [Pleiotropy and charisma determine winners and losers in the REDD+ game: all biodiversity is not equal](#). *Tropical Conservation Science*, 4(3): 261-266.
- Cook, I., Hobson, K., Hallett IV, L., Guthman, J., Murphy, A., Hulme, A., Sheller, M., Crewe, L., Nally, D., Roe, E., Mather, C., Kingsbury, P., Slocum, R., Imai, S., Duruz, J., Philo, C., Buller, H., Goodman, M., Hayes-Conroy, A., Hayes-Conroy, J., Tucker, L., Blake, M., Le Heron, R., Putnam, H., Maye, D. and Henderson, H. (2011) [Geographies of food: 'Afters'](#). *Progress in Human Geography*, 35(1): 104-120.
- Corbera, E., Schroeder, H. and Springate-Baginski, O. (eds.) (2011) [Governing and Implementing REDD+](#). *Environmental Science and Policy*, 12(2).
- Corbera, E. and Schroeder, H. (2011) [Governing and implementing REDD+](#). *Environmental Science and Policy*, 14(2): 89-100.
- Cutler, N. (2011) [Nutrient limitation during long-term ecosystem development inferred from a mat-forming moss](#). *The Bryologist*, 114, 204-214.
- Cutler, N. (2011) [Vegetation-environment interactions in a sub-arctic primary succession](#). *Polar Biology*, 34, 693-706.
- Darby, S. (2011) The 'time' dimension of electricity, options for the householder and implications for policy. *Proceedings, World Renewable Energy Congress, Linköping, Sweden, May 8-11*.
- Darby, S. (2011) Load management at home: advantages and drawbacks of some 'active demand side' options. *Proceedings, 2nd International Conference in Microgeneration and Related Technologies in Buildings, Microgen '11'*, University of Strathclyde, Glasgow, April 4-6.
- Darby, S., Anderson, W. and White, V. (2011) [Large-scale testing of new technology: some lessons from the UK smart metering and feedback trials](#). *Proceedings, European Council for an Energy-Efficient Economy, Summer Study Paper 7-524*.
- Dawson, R.J., Ball, T., Werritty, J., Werritty, A., Hall J.W. and Roche, N. (2011) [Assessing the effectiveness of non-structural flood management measures in the Thames Estuary under conditions of socio-economic and environmental change](#). *Global Environmental Change*, 21(2): 628-646.
- Delafontaine, M., Neutens, T., Schwanen, T. and Van de Weghe, N. (2011) The impact of opening hours on the equity of individual space-time accessibility. *Computers, Environment and Urban Systems*, 35(4): 276-288.
- Dickman, A.J., Macdonald, E.A. and Macdonald, D.W. (2011) [A review of financial instruments to pay for predator conservation and encourage human, carnivore coexistence](#). *Proceedings of the National Academy of Sciences*, 108: 13937-13944.
- Dobruszkes, F., Hubert, M., Laporte, F. and Veiders, C. (2011) [Réorganisation d'un réseau de transport collectif urbain, ruptures de charge et mobilités éprouvantes: l'expérience bruxelloise](#). (Reorganisation of an urban public transport network, transfers and difficult journeys: the experience in Brussels). *Articulo - Journal of Urban Research*, 7: 1-16.
- Doherty, E. and Schroeder, H. (2011) [Forest tenure and multi-level governance in avoiding deforestation under REDD+](#). *Global Environmental Politics*, 11(4): 66-88.

- Doughty, C.E., Asner, G.P. and Martin, R.E. (2011) [Predicting tropical plant physiology from leaf and canopy spectroscopy](#). *Oecologia*, 165(2): 289-299.
- Doughty, C.E., Field, C.B. and McMillan, A.M.S. (2011) [Can crop albedo be increased through the modification of leaf trichomes, and could this cool regional climate?](#) *Climatic Change*, 104(2): 379-387.h
- Drimie, S., Arntzen, J., Dube, P., Ingram, J.S.I., Mano, R.T., Mataya, C., Muchero, M.T., Vhurumuku, E. and Ziervogel, G. (2011) [Global environmental change and food systems in southern Africa: the dynamic challenges facing regional policy](#). *Journal of Geography and Regional Planning*, 4(4): 169-182.
- Espinal de Cavo, F.M. and Martínez de Anguita, P. (2011) [Principios, criterios, indicadores y verificadores para la evaluación de sistemas de pagos por servicios ecosistémicos](#). *Spanish Journal of Rural Development*, 2(1): 115-136.
- Eyre, N. (2011) [Demand reduction and low carbon supply - friends or enemies?](#) *Proceedings of Energy and People: Futures, complexity and challenges Conference*, Oxford, September 2011.
- Eyre, N. (2011) [Efficiency, demand reduction or electrification?](#) *Proceedings of the European Council for an Energy Efficient Economy Summer Study 2011*, Hyeres, France.
- Fattahi, M., Walker, R.T., Talebian, M., Sloan, R.A. and Rasheedi, A. (2011) [The structure and late Quaternary slip rate of the Rafsanjan strike-slip fault, SE Iran](#). *Geosphere*, 7: 1159-1174.
- Favis-Mortlock, D.T. and Mullan, D. (2011) Soil erosion by water under future climate change. In, Shukla, M. (ed.) [Soil Hydrology, Land Use and Agriculture: Measurement and Modelling](#), CAB International. pp. 384-414.
- Fawcett, T. (2011) [The future role of heat pumps in the domestic sector](#). *Proceedings of the European Council for an Energy Efficient Economy Summer Study 2011*, Hyeres, France.
- Fawcett, T. (2011) [Home time: An exploration of the time dimensions of eco-renovation of housing](#). *Proceedings of the Energy and People: Futures, complexity and challenges Conference*, Oxford, September 2011.
- Feeley, K.J., Silman, M.R., Bush, M.B., Farfan, W., Cabrera, K.G., Malhi, Y., Meir, P., Revilla, N.S., Quisiyupanqui, M.N. and Saatchi, S. (2011) Upslope migration of Andean trees. *Journal of Biogeography*, 38(4): 783-791.
- Fripp, M. (2011) [Greenhouse gas emissions from operating reserves used to backup large-scale wind power](#). *Environmental Science and Technology*, 45(21): 9405-9412.
- Givoni, M. and Rietveld, P. (2011) Access to rail in urban areas: examination of the number of stations. In, Button, K. and A. Reggiani (eds.) [Transportation and Economic Development Challenges](#), Edward-Elgar, 264 pp. ISBN: 9781849801676.
- Golubchikov, O., Phelps, N.A. and Makhrova, A. (2011) Khimki in Moscow City-region: from 'closed city' to 'edge city'? Chapter 10 in, Phelps, N.A. and F.Wu (eds.) *International Perspectives on Suburbanization: A post-suburban world?* Palgrave Macmillan. pp. 177-192.
- Goudie, A. (2011) Environmental change. In, Agnew, J.A. and D.N. Livingstone (eds.) [The SAGE Handbook of Geographical Knowledge](#). SAGE, pp. 528-539. ISBN: 9781412910811.
- Goudie, A.S. (2011) Geomorphology: its early history. In, Gregory, K.J. and Goudie, A.S. (eds.) (2011) [The SAGE Handbook of Geomorphology](#), SAGE, pp. 21-35. ISBN: 9781412929059.
- Gregory, K.J. and Goudie, A.S. (2011) Introduction to the discipline of geomorphology. In, Gregory, K.J. and Goudie, A.S. (eds.) (2011) [The SAGE Handbook of Geomorphology](#), SAGE, pp. 1-20. ISBN: 9781412929059.
- Gregory, K.J. and Goudie, A.S. (2011) Conclusion. In, Gregory, K.J. and Goudie, A.S. (eds.) (2011) [The SAGE Handbook of Geomorphology](#), SAGE, pp. 577-586. ISBN: 9781412929059.
- Hall, C., Hamilton, A., Hoff, W.D., Viles, H.A. and Eklund, J.A. (2011) [Moisture dynamics in walls: response to micro-environment and climate change](#). *Proceedings of the Royal Society*, 467(2125): 194-211.
- Hall, J. (2011) [Policy: a changing climate for insurance](#). *Nature Climate Change*, 1(5): 248-250.
- Hall, J.W., Watts, G., Keil, M., de Vial, L., Street, R., Conlan, K., O'Connell, P.E., Beven, K.J. and Kilsby, C.G. (2011) [Towards risk-based water resources planning in England and Wales under a changing climate](#). *Water and Environment Journal*.
- Hawkes, A., Bergman, N., Jardine, C., Staffell, I., Brett, D. and Brandon, N. (2011) A change of scale? Prospects for distributed energy resources. Chapter 8 in, Skea, J., Ekins, P. and Winskel, M. (eds.) [Energy 2050: Making the transition to a secure lower carbon energy system](#). Earthscan, London. ISBN 9781849710848.
- Henschel, P., Hunter, L., Coad, L., Abernethy, K. and Muhlenberg, M. (2011) [Leopard prey choice in the Congo Basin rainforest reveals strong exploitative competition from human bushmeat hunters](#). *Journal of Zoology*, 285(1): 11-20.
- Hervouet, A., Dunford, R., Piegay, H., Belletti, B. and Tremelo, M-L. (2011) [Analysis of post-flood recruitment patterns in braided channel rivers at multiple scales based on an image series collected by unmanned aerial vehicles, ultra-light aerial vehicles, and satellites](#). *GIScience and Remote Sensing*, 48(1): 50-73.
- Hobson, K. (2011) Environmental politics, green governmentality and the possibility of a 'creative grammar' for domestic sustainable consumption. In, Lane, R. and A. Gorman-Murray (eds.) [Material Geographies of Household Sustainability](#). Farnham: Ashgate. ISBN: 978-1-4094-0815-4.
- Holvad, T. (2011) Metro systems in Europe: a comparison of the Copenhagen and Bucharest metros. In, Pratelli, A. and C.A. Brebbia (2011) [Urban Transport XVII: Urban transport and the environment in the 21st century](#). Transactions on the Built Environment Series, no. 116. WIT. pp. 97-108.
- Hovius, N., Meunier, P., Lin, C-W., Chen, H., Chen, Y-G., Dadson, S., Horng, M-J. and Lines, M. (2011) [Prolonged seismically induced erosion and the mass balance of a large earthquake](#). *Earth and Planetary Science Letters*, 304(3-4): 347-355.
- Hubers, C., Schwanen, T. and Dijst, M. (2011) [Coordinating everyday life in the Netherlands: A holistic quantitative approach to the analysis of ICT-related and other work-life balance strategies](#). *Geografiska Annaler, Series B: Human Geography*, 93(1): 57-80.
- Huiteima, D., Jordan, A., Massey, E., Rayner, T., van Asselt, H., Haug, C., Hildingsson, R., Monni, S. and Strippel, J. (2011) [The evaluation of climate policy: theory and emerging practice in Europe](#). *Policy Sciences*, 44(2): 179-198.
- Janda, K.B. (2011) [Buildings don't use energy: people do](#). *Architectural Science Review*, 54(1): 15-22.
- Janda, K.B. and Parag, Y. (2011) [A middle-out approach for improving energy efficiency in existing buildings](#). *Proceedings of the European Council for an Energy Efficient Economy Summer Study 2011*, Hyeres, France.
- Jeffrey, C. (2011) [Geographies of Children and Youth II: Global youth agency](#). *Progress in Human Geography*.
- Jeffrey, C. (2011) Great expectations: youth in contemporary India. In, Clark-Deces, I. (ed.) [A Companion to The Anthropology of India](#). Oxford, Blackwell. 568 pp. ISBN: 978-1-4051-9892-9.

- Jeffery, R., Jeffery, P. and Jeffrey, C. (2011) Parhai Ka Mahaul? An educational environment in Bijnor, Uttar Pradesh. Chapter 6 in, De Neve, G. and H. Donner (eds.) (2011) [The Meaning of the Local: Politics of place in urban India](#). Routledge, 238 pp. ISBN: 9780415596237.
- Jenkins, C.N., Andersen, A.N., Arnan, X., Brühl, C.A., Cerda, X., Ellison, A.M., Fisher, B.L., Fitzpatrick, M.C., Gotelli, N.J., Gove, A.D., Lattke, J.E., Lessard, J.-P., McGlynn, T.P., Menke, S.B., Parr, C.L., Philpott, S.M., Sanders, N.J., Weiser, M.D. and Dunn, R.R. (2011) [Global diversity in light of climate change: the case of ants](#). *Diversity and Distributions*, 17(4): 652-662.
- Jenkins, E., Baker, A. and Elliott, S. (2011) Past plant use in Jordan as revealed by archaeological and ethnoarchaeological phytolith signatures. Chapter 23 in, Mithen, S. and E. Black (eds.) *Water, life and civilisation: climate, environment, and society in the Jordan Valley*, Cambridge University Press, pp. 381-400.
- Jepson, P., Barua, M. and Buckingham, K. (2011) [What is a conservation actor?](#) *Conservation and Society*, 9(3): 229-235.
- Jepson, P., Ladle, R.J. and Sujatnika (2011) [Assessing market-based conservation governance approaches: a socio-economic profile of Indonesian markets for wild birds](#). *Oryx*, 45(4): 482-491.
- Johnstone, K. and Moczarski, A. (2011) [Climate change adaptation. Adapting to climate risks using ISO9001, ISO 14001, BS 25999 and BS 31100](#). British Standards Institution, London.
- Kanowski, P., McDermott, C. and Cashore, B. (2011) [Implementing REDD+: lessons from analysis of forest governance](#). *Environmental Science and Policy*, 14(2): 111-117.
- Killip, G. (2011) [Can market transformation approaches apply to service markets? An investigation of innovation, learning, risk and reward in the case of low-carbon housing refurbishment in the UK](#). *Proceedings of the European Council for an Energy Efficient Economy Summer Study 2011*, Hyeres, France.
- Kristianto, I. and Jepson, P. (2011) [Harvesting Orange-headed Thrush *Zosterops citrina* chicks in Bali, Indonesia: magnitude, practices and sustainability](#). *Oryx*, 45(4): 492-499.
- Ladle, R.J., Jepson, P., Malhado, A.C.M., Jennings, S. and Barua, M. (forthcoming, 2011) The causes and biogeographical significance of species rediscovery. *Frontiers of Biogeography*.
- Lane, S.N., Landström, C. and Whatmore, S.J. (2011) [Imagining flood futures: risk assessment and management in practice](#). *Philosophical Transactions of the Royal Society, A*, 369: 1784-1806.
- Langton, J. (2011) [Forests and chases in Wales and the Welsh Marches: an exploration of their origins and characteristics](#). *Journal of Historical Geography*.
- Lawton Smith, H. (2011) Stimulating regional innovation and entrepreneurship: the UK policy framework. Chapter 3 in, Mian, S.A. (ed.) *Science and Technology Based Regional Entrepreneurship: Global experience in policy and program development*. Edward Elgar. pp. 74-95.
- Le Dortz, K., Meyer, B., Sébrier, M., Braucher, R., Nazari, H., Benedetti, L., Fattahi, M., Bourlès, D., Foroutan, M., Siame, L., Rashidi, A. and Bateman, M.D. (2011) [Dating inset terraces and offset fans along the Dehshir Fault \(Iran\) combining cosmogenic and OSL methods](#). *Geophysical Journal International*, 185(3): 1147-1174.
- Lora-Wainwright, A. (2011) [Eating spring rice: the cultural politics of AIDS in Southwest China - By Sandra Teresa Hyde](#). *Journal of the Royal Anthropological Institute*, 17(3): 656-657.
- Lorenz, A., Schmidt, M.G.W., Kriegler, E. and Held, H. (2011) [Anticipating climate threshold damages](#). *Environmental Modeling and Assessment*.
- Lucas, K. (2011) [Making the connections between transport disadvantage and the social exclusion of low income populations in the Tshwane Region of South Africa](#). *Journal of Transport Geography*, 19(6): 1320-1334.
- Lucas, K. and Markovich, J. (2011) International perspectives on social exclusion research in transport. In, Currie, G. (ed.) *New Perspectives and Methods in Transport and Social Exclusion Research*. Emerald Publishing.
- Macdonald, E.A., Collins, M., Johnson, P.J., Clayton, L.M., Malhi, Y., Fisher, J.B., Milner-Gulland, E.J. and Macdonald, D.W. (2011) [Wildlife conservation and reduced emissions from deforestation in a case study of Nantu National Park, Sulawesi](#). *Environmental Science and Policy*, 14(6): 697-708.
- Malhi, Y., Doughty, C. and Galbraith, D. (2011) [The allocation of ecosystem net primary productivity in tropical forests](#). *Philosophical Transactions of the Royal Society, B*, 366(1582): 3225-3245.
- Maniatis, D., Malhi, Y., Andre, L.S., Mollicone, D., Barbier, N., Saatchi, S., Henry, M., Tellier, L., Schwartzenberg, M. and White, L. (2011) [Evaluating the potential of commercial forest inventory data to report on forest carbon stock and forest carbon stock changes for REDD+ under the UNFCCC](#). *International Journal of Forestry Research*, 2011: 134526. pp. 13.
- Marthews, T.R., Malhi, Y. and Iwata, H. (2011) [Calculating downward longwave radiation under clear and cloudy conditions over a tropical lowland forest site: an evaluation of model schemes for hourly data](#). *Theoretical and Applied Meteorology*.
- Martínez de Anguita, P. and Flores, P. (2011) [Hacia un sistema público-privado de pago por servicios ecosistémicos en España](#). *Spanish Journal of Rural Development*, 2(1): 101-114.
- McDermott, C., Humphreys, D., Wildberger, C., Wood, P., Marfo, E., Pacheco, P. and Yasmi, Y. (2011) Mapping of the core actors and issues defining international forest governance. In, Rayner, J. (ed.) [Embracing complexity: meeting global forest governance challenges](#). Expert Panel on the International Forest Regime, The Collaborative Partnership on Forests.
- McDermott, C.L., Humphreys, D., Wildburger, C., Wood, P., Marfo, E., Pacheco, P. and Yasmi, Y. (2011) Mapping of the core actors and issues defining international forest governance. Chapter 2 in Rayner, J., Buck, A. and P. Katila (eds.) [Embracing Complexity: Meeting the challenges of international forest governance. A global assessment report](#). Global Forest Expert Panel on the International Forest Regime. IUFRO World Series Volume 28. Vienna. pp. 19-36.
- McDermott, C., Levin, K. and Cashore, B. (2011) [Building the forest-climate bandwagon: REDD+ and the logic of problem amelioration](#). *Global Environmental Politics*, 11(3): 85-103.
- McElwain, J.C., Willis, K.J. and Niklas, K.J. (2011) Long term fluctuations in atmospheric CO₂ concentration influence plant speciation rate. Chapter 5, in, Hodkinson, T. et al. (eds.) *Climate change, ecology and systematics*, Systematics Association Special Volume no. 78, Cambridge University Press, pp. 122-140.
- Mercado, L.M., Patino, S., Domingues, T.F., Fyllas, N.M., Weedon, G.P., Sitch, S., Quesada, C.A., Phillips, O.L., Aragao, L.E.O.C. and Malhi, Y. (2011) [Variations in Amazon forest productivity correlated with foliar nutrients and modelled rates of photosynthetic carbon supply](#). *Philosophical Transactions of the Royal Society, B*, 366(1582): 3316-3329.
- Middleton, N. (2011) The human impact. Chapter 22 in, Thomas, D.S.G. (ed.) (2011) [Arid Zone Geomorphology: Process, Form and Change in Drylands](#), 3rd Edition. Wiley, 648 pp. ISBN: 9780470519080.

- Molina, J.-L., Farmani, R. and Bromley, J. (2011) [Aquifers management through evolutionary Bayesian networks: the Altiplano case study \(SE Spain\)](#). *Water Resources Management*.
- Molina, J.-L., García-Aróstegui, J.L., Bromley, J. and Benavente, J. (2011) [Integrated assessment of the European WFD implementation in extremely overexploited aquifers through participatory modelling](#). *Water Resources Management*.
- Morel, A.C., Saatchi, S.S., Malhi, Y., Berry, N.J., Banin, L., Burslem, D., Nilus, R. and Ong, R.C. (2011) [Estimating aboveground biomass in forest and oil palm plantation in Sabah, Malaysian Borneo using ALOS PALSAR data](#). *Forest Ecology and Management*, 262(9): 1786-1798.
- Moran, D., Pallot, J. and Piacentini, L. (2011) [The geography of crime and punishment in the Russian federation](#). *Eurasian Geography and Economics*, 52(1): 79-104.
- Mullan, D., Fealy, R. and Favis-Mortlock, D.T. (2011) [Developing site-specific future temperature scenarios for Northern Ireland: addressing key issues employing a statistical downscaling approach](#). *International Journal of Climatology*.
- Nösperger, S., Killip, G. and Janda, K. (2011) [Building expertise: a system of professions approach to low-carbon refurbishment in the UK and France](#). Paper 5-516. *Proceedings of the European Council for an Energy Efficient Economy Summer Study 2011*, Hyeres, France.
- Ogilvie, D., Bull, F., Powell, J., Cooper, A.R., Brand, C., Mutrie, N., Preston, J.M. and Rutter, H. (2011) [An applied ecological framework for evaluating infrastructure to promote walking and cycling: the iConnect study](#). *American Journal of Public Health*, 101(3): 473-481.
- Osti, M., Coad, L., Fisher, J., Bomhard, B. and Hutton J. (2011) [Oil and gas development in the World Heritage and wider protected area network in sub-Saharan Africa](#). *Biodiversity and Conservation*, 20(9): 1863-1877.
- Paine, C.E.T., Marthews, T.R., Vogt, D.R., Purves, D., Rees, M., Hector, A. and Turnbull, L.A. (2011) [How to fit nonlinear plant growth models and calculate growth rates: an update for ecologists](#). *Methods in Ecology and Evolution*.
- Pall, P., Aina, T., Stone, D.A., Stott, P.A., Nozawa, T., Hilberts, A.G.J., Lohmann, D. and Allen, M.R. (2011) [Anthropogenic greenhouse gas contribution to flood risk in England and Wales in autumn 2000](#). *Nature*, 470: 382-385.
- Parag, Y., Capstick, S. and Poorting, W. (2011) [Policy attribute framing: a comparison between three policy instruments for personal emissions reduction](#). *Journal of Policy Analysis and Management*, 30(4): 889-905.
- Parmentier, I., Harrigan, R.J., Buermann, W., Mitchard, E.T., Saatchi, S., Malhi, Y., Bongers, F., Hawthorne, W.D., Leal, M.E. and Lewis, S.L. (2011) [Predicting alpha diversity of African rain forests: models based on climate and satellite-derived data do not perform better than a purely spatial model](#). *Journal of Biogeography*, 38(6): 1164-1176.
- Parr, C.L. and Gibb, H. (2011) [The discovery-dominance trade-off is the exception, rather than the rule](#). *Journal of Animal Ecology*.
- Powell, R.C. (2011) [From the northern dimension to Arctic strategies? The European Union's envisioning of the high latitudes](#). In, Bialasiewicz, L. (ed.) *Europe in the World: EU Geopolitics and the Making of European Space*, Ashgate: Farnham and Burlington, VT, pp. 105-126.
- Powell, R.C. (2011) [Echoes of the New Geography? History and philosophy of geography I](#). *Progress in Human Geography*.
- Pyrko, J. and Darby, S. (2011) [Conditions of energy efficient behaviour - a comparative study between Sweden and the UK](#). *Energy Efficiency*, 4: 393-408.
- Quigley, M., Fattahi, M., Sohbaty, R. and Schmidt, A. (2011) [Palaeoseismicity and pottery: Investigating earthquake and archaeological chronologies on the Hajiarab alluvial fan, Iran](#). *Quaternary International*, 242: 185-195.
- Román-Cuesta, R.M., Salinas, N., Asbjornsen, H., Oliveras, I., Huaman, V., Gutiérrez, Y., Puellas, L., Kalad, J., Yabar, D., Rojas, M., Astete, R., Jordán, D.Y., Silman, M., Mosandl, R., Weber, M., Stimm, B., Günter, S., Knoke, T., and Malhi, Y. (2011) [Implications of fires on carbon budgets in Andean cloud montane forest: The importance of peat soils and tree resprouting](#). *Forest Ecology and Management*, 261(11): 1987-1997.
- Rosenow, J. (2011) [Different paths of change: the case of domestic energy efficiency policy in Britain and Germany](#). *Proceedings of the European Council for an Energy Efficient Economy Summer Study 2011*, Hyeres, France.
- Sayer, E.J., Heard, M.S., Grant, H.K., Marthews, T.R. and Tanner, E.V.J. (2011) [Soil carbon release enhanced by increased tropical forest litterfall](#). *Nature Climate Change*, 1: 304-307.
- Schmidt, A., Quigley, M., Fattahi, M., Azizi, G., Maghsoudi, M. and Fazeli, H. (2011) [Holocene settlement shifts and palaeoenvironments on the Central Iranian Plateau: investigating linked systems](#). *The Holocene*, 21(4): 583-595.
- Schroeder, H. and Lovell, H. (2011) [The role of non-nation state actors and side events in the international climate negotiations](#). *Climate Policy*.
- Schwanen, T., Banister, D. and Anable, J. (2011) [Scientific research about climate change mitigation in transport: a critical review](#). *Transportation Research Part A: Policy and Planning*, 45(10): 993-1006.
- Schwanen, T. and Ziegler, F. (2011) [Wellbeing, independence and mobility: an introduction](#). *Ageing and Society*, 31(5): 719-733.
- Simon, G., Bumpus, A. and Mann, P. (2011) [Win-win scenarios at the climate-development interface: challenges and opportunities for cookstove replacement programs through carbon finance global environmental change](#). *Global Environmental Change*.
- Sinden, G.E., Peters, G.P., Minx, J. and Weber, C. (2011) [International flows of embodied CO₂ with an application to aluminium and the EU ETS](#). *Climate Policy Journal*, 5(11): 1226-1245.
- Skea, J., Hardy, J., Gross, R., Mitchell, C., Baker, P., Eyre, N. and Ekins, P. (2011) [UKERC response to DECC Electricity Market Reform consultation](#). UK Energy Research Centre.
- Staffell, I., Baker, P., Barton, J., Bergman, N., Blanchard, R., Brandon, N.P., Brett, D.J.L., Hawkes, A., Infield, D., Jardine, C., Kelly, N., Leach, M., Matian, M., Peacock, A.D., Sudtharalingam, S. and Woodman, B. (2010) [UK Microgeneration. Part II: technology overviews](#). *Proceedings of the ICE - Energy*, 163(4) 143-166.
- Thomas, D.S.G. (2011) [Grove AT \(1969\) Landforms and climate change in the Kalahari and Ngamiland](#). *Progress in Physical Geography*, 35(2): 263-266.
- Thomas, D.S.G. (2011) [Arid environments: their nature and extent](#). Chapter 1 in, Thomas, D.S.G. (ed.) (2011) *Arid Zone Geomorphology: Process, Form and Change in Drylands*, 3rd Edition. Wiley, 648 pp. ISBN: 9780470519080.
- Thomas, D.S.G. (2011) [Dryland system variability](#). Chapter 4 in, Thomas, D.S.G. (ed.) (2011) *Arid Zone Geomorphology: Process, Form and Change in Drylands*, 3rd Edition. Wiley, 648 pp. ISBN: 9780470519080.
- Thomas, D.S.G. (2011) [Aeolian landscapes and bedforms](#). Chapter 17 in, Thomas, D.S.G. (ed.) (2011) *Arid Zone Geomorphology: Process, Form and Change in Drylands*, 3rd Edition. Wiley, 648 pp. ISBN: 9780470519080.

- Thomas, D.S.G. and Burrough, S.L. (2011) Climatic frameworks: legacies from the past. Chapter 3 in, Thomas, D.S.G. (ed.) (2011) [Arid Zone Geomorphology: Process, Form and Change in Drylands](#), 3rd Edition. Wiley, 648 pp. ISBN: 9780470519080.
- Thomas, M.V., Malhi, Y., Fenn, K.M., Fisher, J.B., Morecroft, M.D., Lloyd, C.R., Taylor, M.E. and McNeil, D.D. (2011) [Carbon dioxide fluxes over an ancient broadleaved deciduous woodland in southern England](#). *Biogeosciences*, 8: 1595-1613
- Thornton, T. (2011) Language and landscape among the Tlingit. Chapter 13, in Mark, D.M., Turk, A.G., Burenhult, N. and D. Stea (eds.) *Landscape in Language. Transdisciplinary perspectives*. John Benjamins Publishing, pp. 275-289.
- Thornton, T.F. (2011) Already here and rich. In, Holder Spude, C., Mills, R.O., Gurcke, K. and R. Sprague (eds.) [Eldorado! The Archaeology of Gold Mining in the Far North](#). University of Nebraska Press.
- Topouzi, M. (2011) [Understanding occupants' interaction with the technical change in low-carbon retrofits: a methodological and conceptual framework](#). *Proceedings of the European Council for an Energy Efficient Economy Summer Study 2011*, Hyeres, France.
- Topouzi, M. (2011) [The effect of 'default user' inputs in modelling tools and methods in energy use](#). *Proceedings of Passive and Low Energy Architecture - PLEA*, Brussels.
- van Asselt, H. (2011) Integrating biodiversity in the climate regime's forest rules: options and tradeoffs in greening REDD design. *Review of European Community and International Environmental Law*, 20(2): 139-149.
- Viles, H.A. (2011) Biogeomorphology. In, Gregory, K.J. and Goudie, A.S. (eds.) (2011) [The SAGE Handbook of Geomorphology](#), SAGE. pp. 246-259. ISBN: 9781412929059.
- Viles, H.A. (2011) Weathering systems. Chapter 6 in, Thomas, D.S.G. (ed.) (2011) [Arid Zone Geomorphology: Process, Form and Change in Drylands](#), 3rd Edition. Wiley, 648 pp. ISBN: 9780470519080.
- von Glasenapp, M. and Thornton, T.F. (2011) [Traditional ecological knowledge of Swiss alpine farmers and their resilience to socioecological change](#). *Human Ecology*.
- Walkden, M.J.A. and Hall, J. (2011) [A mesoscale predictive model of the evolution and management of a soft rock coast](#). *Journal of Coastal Research*, May 2011: 529-543.
- Walker, R.T. and Fattahi, M. (2011) [A framework of Holocene and Late Pleistocene environmental change in eastern Iran inferred from the dating of periods of alluvial fan abandonment, river terracing, and lake deposition](#). *Quaternary Science Reviews*, 30: 1256-1271.
- Washington, R. and Thomas, D.S.G. (2011) Future climate change and arid zone geomorphology. Chapter 24 in, Thomas, D.S.G. (ed.) (2011) [Arid Zone Geomorphology: Process, Form and Change in Drylands](#), 3rd Edition. Wiley, 648 pp. ISBN: 9780470519080.
- Washington, R. and Wiggs, G.F.S. (2011) Desert dust. Chapter 20 in, Thomas, D.S.G. (ed.) (2011) [Arid Zone Geomorphology: Process, Form and Change in Drylands](#), 3rd Edition. Wiley, 648 pp. ISBN: 9780470519080.
- Watkiss, P. (2011) [Aggregate economic measures of climate change damages: explaining the differences and implications](#). *Climate Change*, 2(3): 356-372.
- Watson, R. and Albon, S. (Coordinating lead authors and 46 authors including Berry, P.) (2011) [UK National Ecosystem Assessment: Synthesis of the Key Findings](#). UNEP-WCMC, Cambridge.
- Whittaker, R.J. and Kerr, J.T. (2011) [In search of general models in evolutionary time and space](#). *Journal of Biogeography*, 38(11): 2041-2042.
- Wiggs, G.F.S. (2011) Sediment mobilisation by the wind. Chapter 18 in, Thomas, D.S.G. (ed.) (2011) [Arid Zone Geomorphology: Process, Form and Change in Drylands](#), 3rd Edition. Wiley, 648 pp. ISBN: 9780470519080.
- Wiggs, G.F.S. (2011) Geomorphological hazards in drylands. Chapter 23 in, Thomas, D.S.G. (ed.) (2011) [Arid Zone Geomorphology: Process, Form and Change in Drylands](#), 3rd Edition. Wiley, 648 pp. ISBN: 9780470519080.
- Williams, M. (2011) Conservation and environmental change. In, Agnew, J.A. and D.N. Livingstone (eds.) [The SAGE Handbook of Geographical Knowledge](#). SAGE, pp. 581-594. ISBN: 9781412910811.
- Willis, K.J., Bhagwat, S.A. and Edwards, M.E. (2011) The biogeographic importance of Pleistocene refugia. Chapter 7 in, Millington, A., Blumler, M. and Schickhoff, U. (eds.) [The SAGE Handbook of Biogeography](#), SAGE, pp. 118-136. ISBN: 9781412919517.
- Wiser, R., Yang, Z., Hand, M., Hohmeyer, O., Infield, D., Jensen, P.H., Nikolaev, V., O'Malley, M., Sinden, G. and A. Zervos (2011) Wind energy. In, Edenhofer, O., Pichs-Madruga, R., Sokona, Y., Seyboth, K., Matschoss, P., Kadner, S., Zwickel, T., Eickemeier, P., Hansen, G., Schlömer, S. and C. von Stechow (eds.) [IPCC Special Report on Renewable Energy Sources and Climate Change Mitigation](#), Cambridge University Press.
- Wójcik, D. (2011) [Securitization and its footprint: the rise of the US securities industry centres 1998-2007](#). *Journal of Economic Geography*.
- Zelazowski, P., Sayer, A., Thomas, G. and Grainger, R. (2011) [Reconciling satellite-derived atmospheric properties with fine-resolution land imagery - insights for atmospheric correction](#). *Journal of Geophysical Research - Atmospheres*.
- Ziegler, F. and Schwanen, T. (2011) ['I like to go out to be energised by different people': an exploratory analysis of mobility and wellbeing in later life](#). *Ageing and Society*, 31(5): 758-781.

eSoGE News is produced four times a year and distributed mainly by e-mail. If you wish to contact us please email newsletter@ouce.ox.ac.uk or visit www.geog.ox.ac.uk/esoge eSoGE News is © 2011 School of Geography and the Environment, University of Oxford.

The University accepts no responsibility for the content of any material in eSoGE News. Readers should note in particular that the inclusion of news and editorial items does not imply endorsement by the University of the matters reported, or the views expressed.